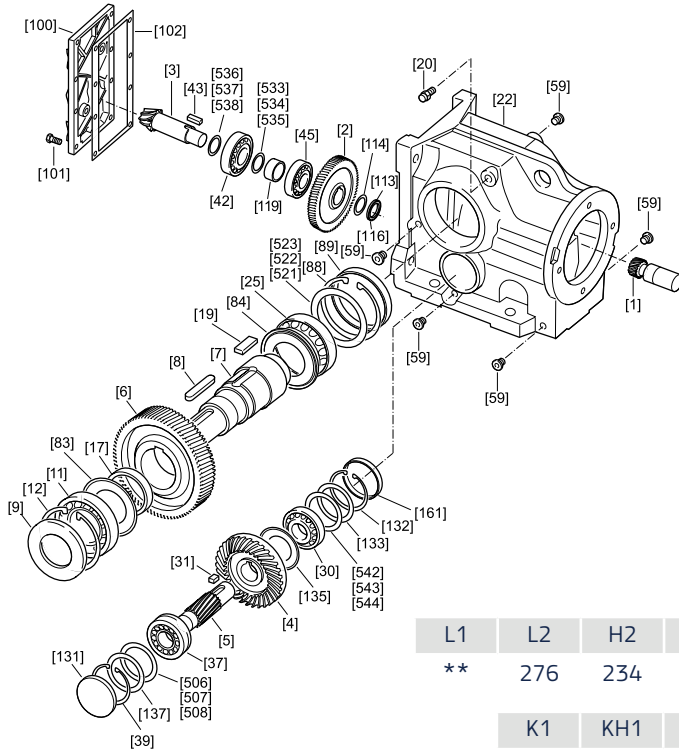


دیتاشیت و مشخصات فنی گیربکس بول هلیکال شریف

اجزاء سازنده

Components

No.	Name
[1]	Pinion
[2]	Gear
[3]	Pinion shaft
[4]	Gear
[5]	Pinion shaft
[6]	Gear
[7]	Output shaft
[8]	Key
[9]	Oil seal
[11]	Rolling bearing
[12]	Retaining ring
[17]	Spacer tube
[19]	Key
[20]	Breather valve
[22]	Gear unit housing
[25]	Rolling bearing
[30]	Rolling bearing
[31]	Key
[37]	Rolling bearing
[39]	Retaining ring
[42]	Rolling bearing
[43]	Key
[45]	Rolling bearing
[59]	Screw plug
[83]	Shield ring
[84]	Shield ring
[88]	Retaining ring
[89]	Closing cap
[100]	Inspection cover
[101]	Hex head screw
[102]	Gasket
[113]	Slotted nut
[114]	Multi-tang washer
[116]	Thread lock



No.	Name
[119]	Spacer tube
[131]	Closing cap
[132]	Retaining ring
[133]	Supporting ring
[135]	Shield ring
[137]	Supporting ring
[161]	Closing cap
[506]-[544]	Shim

نقشه انفجاری

Exploded view drawing

K67



مشخصات عمومی

General information

فولاد	جنس دنده
Steel	Gear material
چدن	جنس پوسته
Iron	Shell material
40 (mm)	قطر شافت یا هالو شافت خروجی Output shaft or hollow shaft diameter
40 (mm)	قطر هالو شفت در صورت استفاده از شیرینگ دیسک The diameter of the hollow shaft with shrink disk

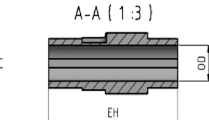
ابعاد و اندازه

Dimensions and size

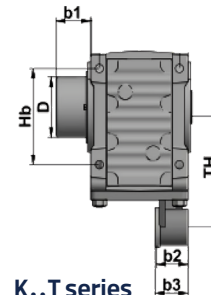
L1	L2	H2	Ch	CL	W	Wb	Hb	OL	Lb	Od	K	Kh	OD	EH
**	276	234	140	90	170	140	160	80	120	40	120	35	40	185
K1	KH1	OD2	EH2	Hb	D	b1	b2	b3	TH	d2	d3	b		
12	43.3	40	214	160	110	54	55	60	200	180	250	23		



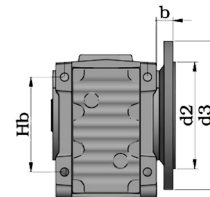
KA series



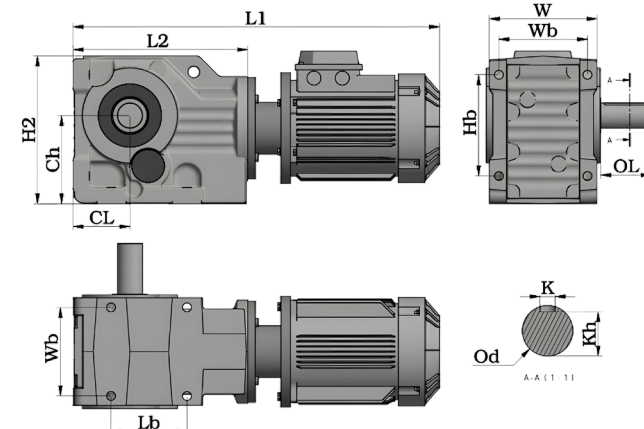
KH series



K..T series



KF series



Power		Speed	Pole	n2	Ratio	T	Fs
(kw)	(hp)	(rpm)	Num	(rpm)		(N.m)	
0.37	0.5	1000	6P	15	60.7	236	2.84
0.37	0.5	1000	6P	21	45.35	168	4.24
0.55	0.75	1000	6P	16	60.7	328	1.89
0.55	0.75	1000	6P	21	45.35	250	2.83
0.55	0.75	1500	4P	24	60.7	219	2.85
0.75	1	1000	6P	16	60.7	448	1.4
0.75	1	1000	6P	21	45.35	341	2.12
0.75	1	1500	4P	24	60.7	298	2.14
0.75	1	1500	4P	32	45.35	224	3.2
1.1	1.5	1000	6P	21	45.35	500	1.41
1.1	1.5	1500	4P	24	60.7	438	1.43
1.1	1.5	1500	4P	32	45.35	328	2.15
1.1	1.5	1500	4P	41	35.41	256	2.9
1.1	1.5	1500	4P	51	28.46	206	2.9
1.1	1.5	1500	4P	63	22.88	167	4

Power		Speed	Pole	n2	Ratio	T	Fs
(kw)	(hp)	(rpm)	Num	(rpm)		(N.m)	
1.5	2	1500	4P	24	60.7	597	1
1.5	2	1500	4P	32	45.35	448	1.61
1.5	2	1500	4P	41	35.41	349	2.19
1.5	2	1500	4P	47	30.63	305	2
1.5	2	1500	4P	51	28.46	281	2.12
1.5	2	1500	4P	63	22.8	227	3
1.5	2	1500	4P	81	17.87	177	4.2
1.5	2	1500	4P	100	14.36	143	4.9
2.2	3	1500	4P	41	35.41	512	1.46
2.2	3	1500	4P	51	28.46	412	1.41
2.2	3	1500	4P	63	22.88	333	2
2.2	3	1500	4P	81	17.87	259	2.8
2.2	3	1500	4P	100	14.36	210	3.27
3	4	1500	4P	40	35.41	716	1.1
3	4	1500	4P	63	22.88	455	1.53

Power		Speed	Pole	n2	Ratio	T	Fs
(kw)	(hp)	(rpm)	Num	(rpm)		(N.m)	
3	4	1500	4P	81	17.87	354	2.1
3	4	1500	4P	100	14.36	287	2.45
3	4	1500	4P	110	13.29	260	2.2
3	4	1500	4P	145	9.93	198	3.3
4	5.5	1500	4P	63	22.88	606	1.11
4	5.5	1500	4P	81	17.87	472	1.53
4	5.5	1500	4P	100	14.36	382	1.78
4	5.5	1500	4P	110	13.29	347	1.61
4	5.5	1500	4P	145	9.93	263	2.4
5.5	7.5	1500	4P	100	14.36	525	1.31
5.5	7.5	1500	4P	110	13.29	478	1.18
5.5	7.5	1500	4P	145	9.93	362	1.78
5.5	7.5	1500	4P	187	7.76	281	2.43